

ProxTech's PREMIUM card readers : versatility is the word

Whenever there's a need for connecting a remote RFID card reader to a control panel, there's always the big question of compatibility. Every control panel has different interface requirements for external readers, so you need a lot of different models on stock to cover all of these.

Well, not any more now. PREMIUM card readers, available for 125 kHz EM, 13.56 MHz Mifare and 125 kHz HID compatible, offer the user a wide selection of different interfaces, all readily integrated in one single reader. You can simply select the one you need, and it's done ...

What an advantage for distributors or technical service engineers. No more need to carry more than 10 different versions, one covers it all.

The PREMIUM reader

Offering a wide selection of readily integrated and user-selectable interfaces, PREMIUM is very flexible in its use.

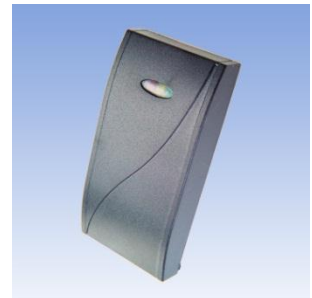
The readers are available for following technologies :

- ✓ PREMIUM-EM : a 125 kHz reader, supporting EM4x02 or equivalent transponders
- ✓ PREMIUM-H : a 125 kHz reader for HID transponders
- ✓ PREMIUM-MF : a 13,56 MHz Mifare UID reader supporting Mifare, Mifare Ultralight, Mifare Desfire, Mifare PLUS S and Mifare PLUS X
- ✓ PREMIUM-MFS : a 13,56 MHz Mifare Sector reader allowing full access to all sectors on the Mifare 1k and 4k transponder.

PREMIUM's modern, yet discrete design allows an easy blend in almost every architectural background. And thanks to the fully potted housing, PREMIUM readers can be installed both in- as outdoors.

The presence of 3 LEDs (red/green/yellow) and a buzzer – which can all be controlled externally if needed – and the 1 m long cable complete this reader as one of the most versatile readers on the market.

And for your ease, every PREMIUM reader is supplied with an extra spacer plate for easy and perfect mounting on metal surfaces.



Some features of the PREMIUM readers

- ✓ Dimensions: 89 x 45 x 16 mm, optional spacer plate 89 x 45 x 7 mm (supplied with each reader)
- ✓ Interface: DIP-switch selectable (or selectable with Master Card for PREMIUM-MFS)
 - Wiegand (42 bits, 34 bits or 26 bits)
 - on PREMIUM-MF only : also Wiegand 58 bits to output complete UID of mifare® DESFire, mifare® Ultralight and mifare® Plus X
 - Standard Clock & Data (13, 10, 9 or 8 characters)
 - on PREMIUM-MF only : also Basic Clock & Data (56 bits) to output complete UID of mifare® DESFire, mifare® Ultralight and mifare® Plus X
 - RS232 (9600, 4800 or 2400 Bd)
 - TTL (9600, 4800 or 2400 Bd)
 - RS485 (requires special version of the reader - only available for PREMIUM-EM 125kHz reader)
 - customer specific interfaces available on request
- ✓ Typical read ranges :
 - on 125 kHz up to 175 mm
 - on 13,56 MHz up to 60 mm

- ✓ Power supply : 5 Vdc to 13,8 Vdc / 100 mA typ.
- ✓ Wiring : 10-wire cable (approx. 1 m long)
- ✓ Protection rate : IP65

These characteristics, the user-selectable choice of built-in interfaces, the well-designed IP65 waterproof housing and definitely not in the least the very competitive price make the PREMIUM reader your best choice for RFID.