

## ProxTech's COMPACT RFID modules allow easy RFID integration into existing infrastructure

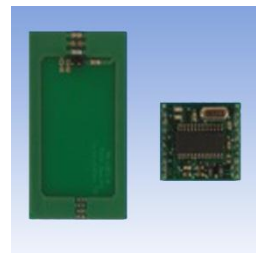
Whenever there's a need to add RFID to an already existing terminal or other system, the main problem is always the space limitations.

With its range of COMPACT modules, ProxTech offers a selection of small-sized RFID modules for different technologies.

### COMPACT : a compact-sized RFID solution

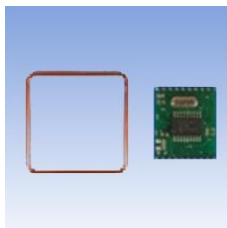
With dimensions not more than 31 x 25 x 6 mm, the COMPACT modules can be integrated into almost every new or existing terminal.

COMPACT modules are available for both 125 kHz and 13.56 MHz transponder technologies and offer full pin-compatibility and data interface-compatibility. You can easily switch from one technology to another by simply replacing one COMPACT module by another. This allows you to upgrade in a very simple manner from for instance a simple 125 kHz EM based terminal to a 13.56 MHz Mifare or Legic based terminal. And all of this can be done without the need for extra firmware development, since the data interface for all technologies can be completely identical.



### COMPACT : limited in size, not in capabilities

The COMPACT module range is very flexible and is available in 13.56 MHz Mifare or Legic transponder technologies or for 125 kHz EM or Hitag technologies.



The COMPACT modules can be supplied with a wide variety of interfaces such as different wiegand, clock&data or serial TTL outputs. RS232 or RS485 can be made available over external drivers.

Also some I/O ports are available for customer-specific requirements.

The module is supplied with an external antenna, making integration even more easier

### Technical specification for the COMPACT module

- Dimensions: 31 x 25 x 6 mm
- Available for EM4x02, Hitag, Mifare or Legic technology
- All COMPACT modules are pin-compatible
- Interfaces available:
  - Wiegand D0/D1 (TTL levels) (several bit-block lengths available)
  - Clock & Data (TTL levels) (several numbers of characters available)
  - TTL (9600, 4800 or 2400 Bd) Asynchronous serial (RxD, TxD)
  - RS232 or RS485 available over external driver (not included) (DE-signal for RS485 drivers is available)
  - customer specific interfaces available on request
- External antenna ( wired antenna for 125 kHz modules, etched pcb antenna for 13,56 MHz modules )
- Read range with standard antenna (values depending on transponder types, power supply and ambient environment)
  - on 125 kHz up to 100 mm
  - on 13,56 MHz up to 80 mm
- Power supply: 5 Vdc ± 5%

- I/O ports available for customer-specific requirements
- Duplicate read control
- Temperature range: -20°C to + 60°C
- A standard external antenna is supplied with each module

**COMPACT modules : the intelligent and small-sized RFID solution**

Whenever there's a need for a small-sized RFID module for integration into new or existing terminals, the COMPACT module is the perfect solution.

Available for different technologies both on 125 kHz as on 13.56 MHz, pin- and interface-compatible, and extremely small-sized, COMPACT modules can stand up to almost all requirements.