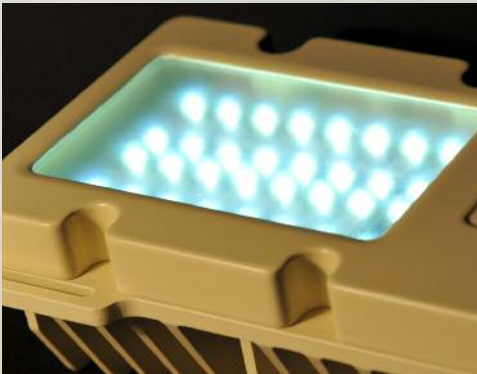




shelter lighting

LED lighting for soft and hard walled structures

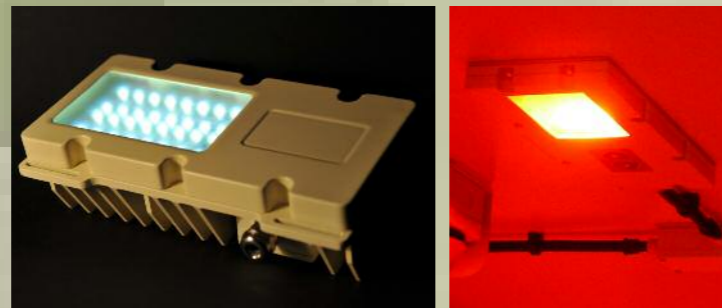


Oxley is a pioneer in the field of LED lighting. We produce a range of high specification products for tents and hard-walled shelters such as ground stations, communications centres, storage containers and military field hospitals.

Established since 1942, we have designed and manufactured LED based products for over four decades. We are globally renowned for our innovative solutions for land, aircraft and naval platforms.

applications

- Tents and Shelters
- Military field hospitals
- Tactical communications centres
- Ground stations
- Command posts
- UAV control stations
- Field storage containers



Clockwise from top: combi light white variant, red blackout mode and fitted with heat sink for tent applications

Robust and reliable, Oxley lights are 'fit and forget' solutions designed for new build or to replace existing incandescent and fluorescent lighting in retrofit projects.

Our LED lights are used in a range of soft and hard walled shelter applications. Our customers have been overwhelmed by the superior performance of our LEDs in comparison to traditional light fixtures.



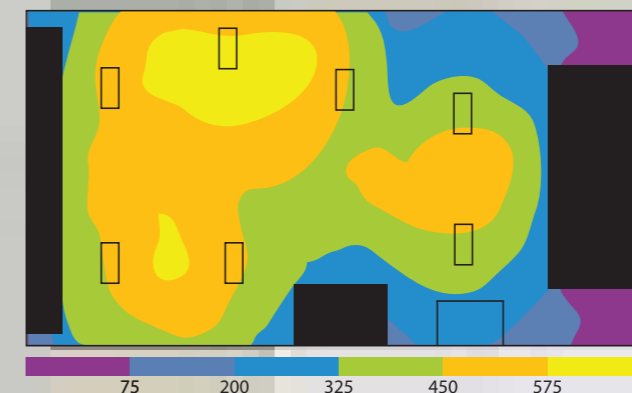
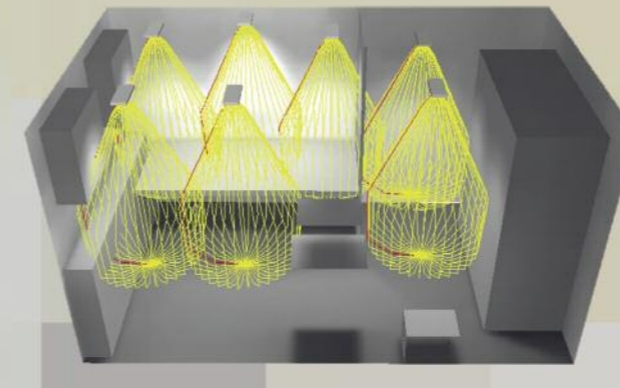
Oxley lights are installed in this Norwegian field hospital supplied by Marshall LS

LED Combi Light Features and Benefits

Feature	Advantage	Benefit
low profile	reduced space envelope	increased work space
multi-input voltage	no need for external power one unit fits multiple voltages	simple to fit and connect reduced installation time, reduced stock
solid state design - LED technology	resistant to extreme shock and vibration fit and forget	can be deployed without fear of failure no through-life support
lightweight	ease of assembly	reduced fuel cost in transportation
EMC compliant	fully approved to EMC Def-stan 59-411	full protection to all other electronic equipment
internal battery back up	light on when power is out	full productivity when power down, safe egress
military blackout mode	reduced light signature	safety of personnel and equipment
programmable dimmer	user friendly lighting options	ensures suitability for all work stations
high mean time between failure	reduced through life cost	reduced inventory, high reliability
intelligent microprocessor	assesses its environment and compensates	increased operational life
sealed up to IP67	no internal ingress	allows use and storage in extreme conditions
efficient optical design	maximum performance from smallest unit	less units required to light space

the right light output

Utilising our knowledge and experience we can ensure that the required light levels are achieved from the appropriate number of LEDs. We use DIALux software to simulate typical light levels in a shelter which calculates the number of Oxley lights required and their best positions to get the maximum benefit.



This example demonstrates illumination in all areas and a high light output at the desk area

key features

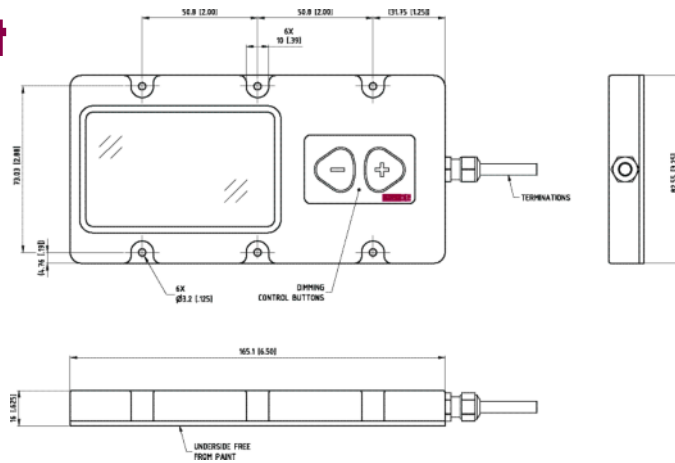
- Oxley combi lights provide up to three light functions in one housing - main, blackout and emergency
- In blackout mode the main white light is instantly replaced by a low level lighting in a choice of red, green or blue
- These lights are Oxley NVG Friendly.™ The light output will not adversely affect the performance of night vision goggles
- Withstands shock, vibration and extreme temperatures
- We can control the colour temperature of the LEDs to deliver either warm white (high CRI) or cold white, depending on the customer preference or requirements
- Fully RoSH compliant solutions are available
- DEFSTAN 59-411 compliant, these lights offer high levels of EMC protection for land-based applications Class A and B
- CE marked

Paint finishes

- white
- black
- eggshell



dc combi light

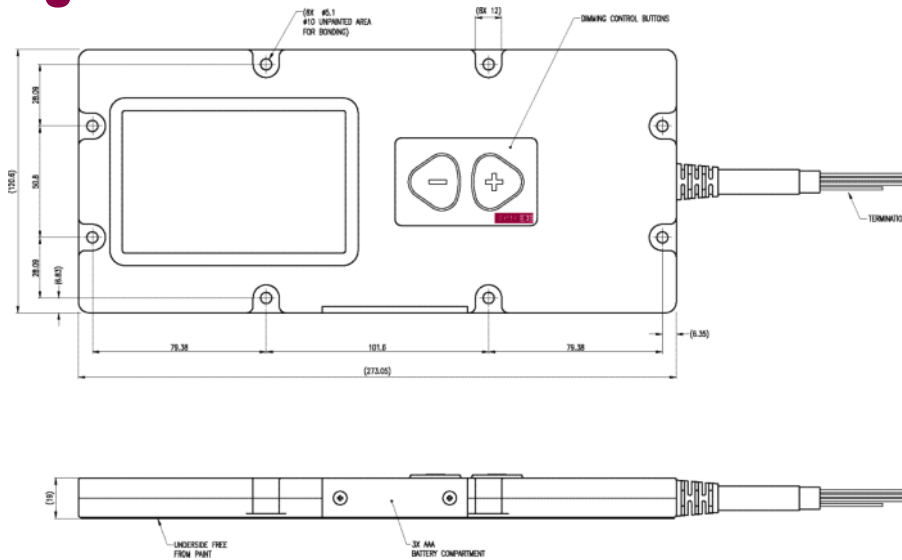


Part number	colour	output lumens (typ)	dimensions	features	blackout mode*	input volts dc
OXLEDCP40357-WR	White	1400	165 x 73 x 16	dimnable	red	12 - 32
OXLEDCP40357-WG	White	1400	165 x 73 x 16	dimnable	green	12 - 32
OXLEDCP40357-WB	White	1400	165 x 73 x 16	dimnable	blue	12 - 32

Minimum dim level will be approximately 5% of full brightness (70 lumens)

* non dimmable

ac combi light



Part number	colour	output lumens (typ)	dimensions	features	blackout mode*	input volts dc
OXLEDCP38866/02	White	1400	273 x 120 x 19	dimnable	red	110 - 230
OXLEDCP38866/01	White	1400	273 x 120 x 19	dimnable	green	110 - 230
OXLEDCP38866	White	1400	273 x 120 x 19	dimnable	blue	110 - 230

Minimum dim level will be approximately 5% of full brightness (70 lumens)

* non dimmable

Oxley Developments Company Ltd

Priory Park Ulverston Cumbria LA12 9QG United Kingdom
t: +44 (0) 1229 483226 f: +44 (0) 1229 581851 e: sales@oxleygroup.com

Oxley Inc

31 Business Park Drive Branford CT 06405 USA
t: +1 (203) 488 1033 f: +1 (203) 481 6971 e: info@oxleygroup.com

Company Approvals: BS EN 9100: 2003 ISO 9001:2000 both on Certificate No. FM 01759 • ISO 14001:2004 Certificate No: EMS 60559