



Smart Scenario Generation (SSG) Technology

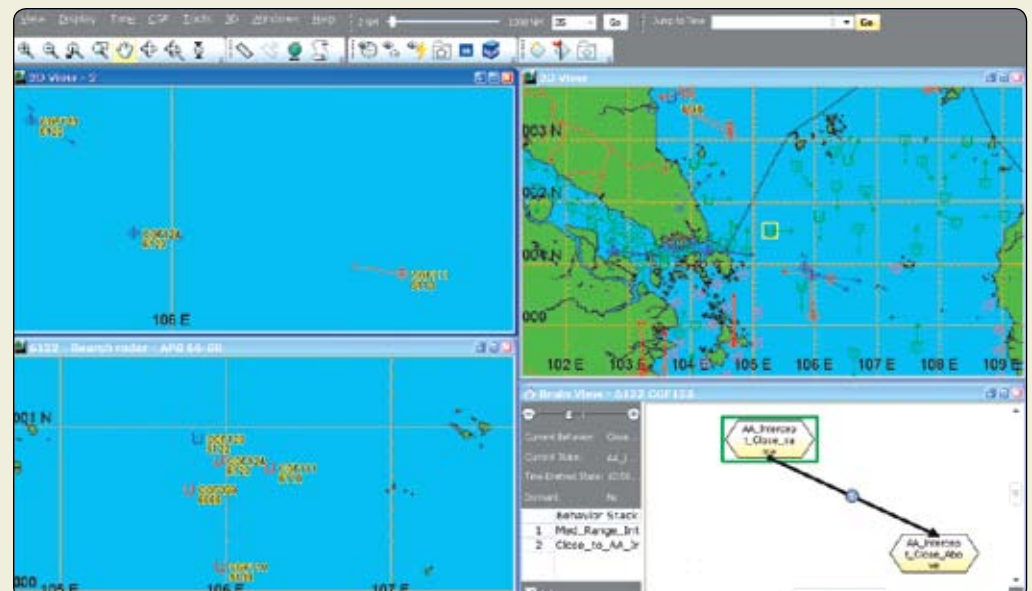
Training in “real world” scenarios is limited, due to various restrictions and limitations such as cost constraints, safety considerations and logistic considerations.

In order to overcome these limitations, the use of advanced simulation technology is a necessity. Military forces have become adept at using “virtual environments” to practically represent real world activities.

HarTech’s **Simax (Smart Scenario Generator)** provides a virtual environment for various types of applications covering many domains within the Training and Simulation Community. These include live, virtual, and constructive simulation as well as the creation of a virtual environment for the development and integration of command and control systems.

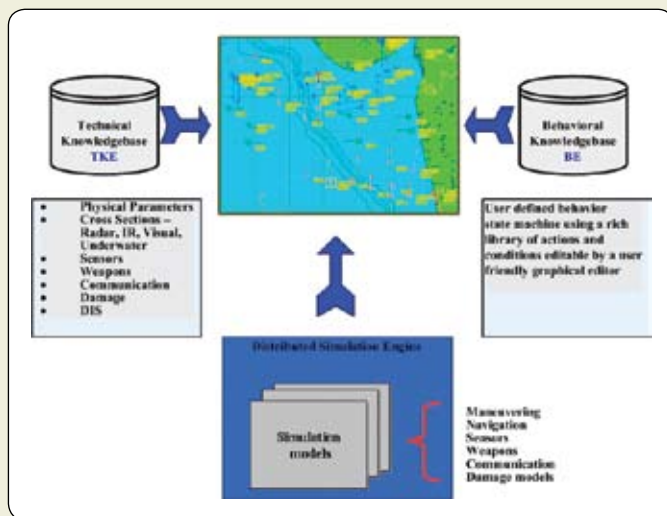
Simax is most suitable for use in the following training systems:

- Strategic and Tactical training systems for the various command levels
- War-gaming systems
- Mission simulators
- Debriefing systems



The smart scenario generator

Virtual World Representation



Simax makes use of knowledgebase driven simulation. The different simulation models provided are all parametric and the different parameters are read in the initialization of every running session from the systems knowledgebase. Simax makes use of two internal editable knowledge data bases:

The Technical Knowledgebase TKE consists of the technical data and parameters of craft, sensors, weapons etc.

The Behaviour Knowledgebase BE a “state machine” aiming to describe the entities behaviour - doctrines, conditions and actions.

The SiMAX main capabilities:

- Creation of complex multi user virtual environments which are not bounded by software
- Maintain large number of entities (over 30,000) in the virtual environment.
- Support the generation and management of various platforms (airborne, surface, ground-based or human), weapons, sensors and counter-measures.
- Management of Hierarchical CGF Units
- Support the calculation of interactions between all entities in the virtual environment
- Support of distributed simulation over various bandwidths
- Support the integration of external systems with the virtual environment

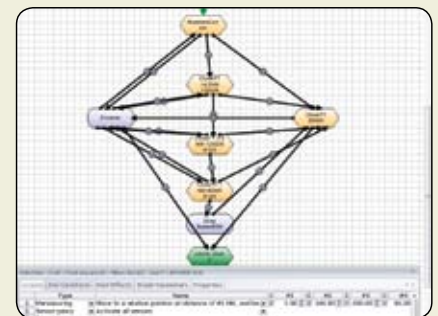
Simax is available as a complete package or as separate components according to the customer's specific needs.

Hartech Technology is focused on providing a quick and practical response to all operational requirements.

TKE display



BE display



We are here to answer all your questions and will be happy to meet and discuss your needs. For more details, please contact: marketing@hartech.co.il